

uvod u scensko svjetlo

10. PRAVCI SVJETLA

ODABIROM PRAVCA SVJETLA POSTIŽEMO RAZLIČITE NAČINE MODELIRANJA LICA GLUMACA TE OBJEKATA NA SCENI. MODELIRANJEM SVJETLOM NAGLAŠAVAMO RAZLIČITE KARAKTERE I EMOCIJE U GLUMAČKOJ IGRI TE STVARAMO ATMOSFERU.

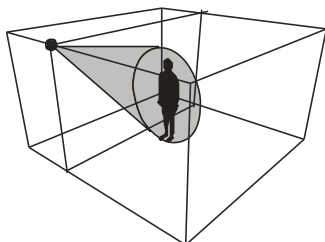
GLAVNE PRAVCE SVJETLA DJELIMO NA:

- PREDNJE
- GORNJE
- KONTRA
- BOČNO

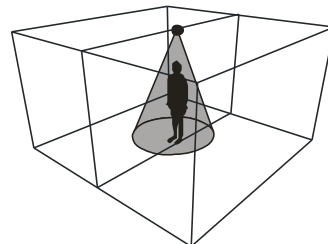
PREMA VISINI POSTAVLJENO SVJETLO DJELIMO NA:

- VISOKO
- NISKO
- RAVNO

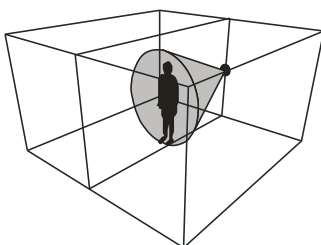
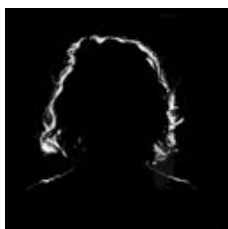
PREDNJE GORNJE SVJETLO



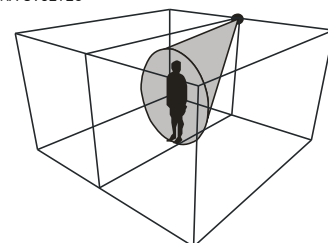
GORNJE SVJETLO



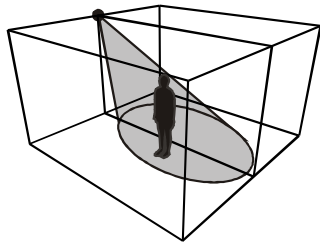
RAVNO KONTRA SVJETLO



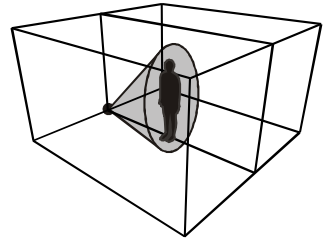
KONTRA SVJETLO



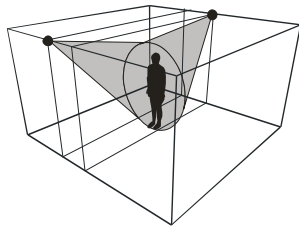
BOČNO VISOKO SVJETLO



BOČNO NISKO SVJETLO



KOMPOZICIJA PREDNJEG BOČNOG I KONTRA SVJETLA



UTJECAJ PRAVCA SVJETLA NA STVARANJE SJENA



